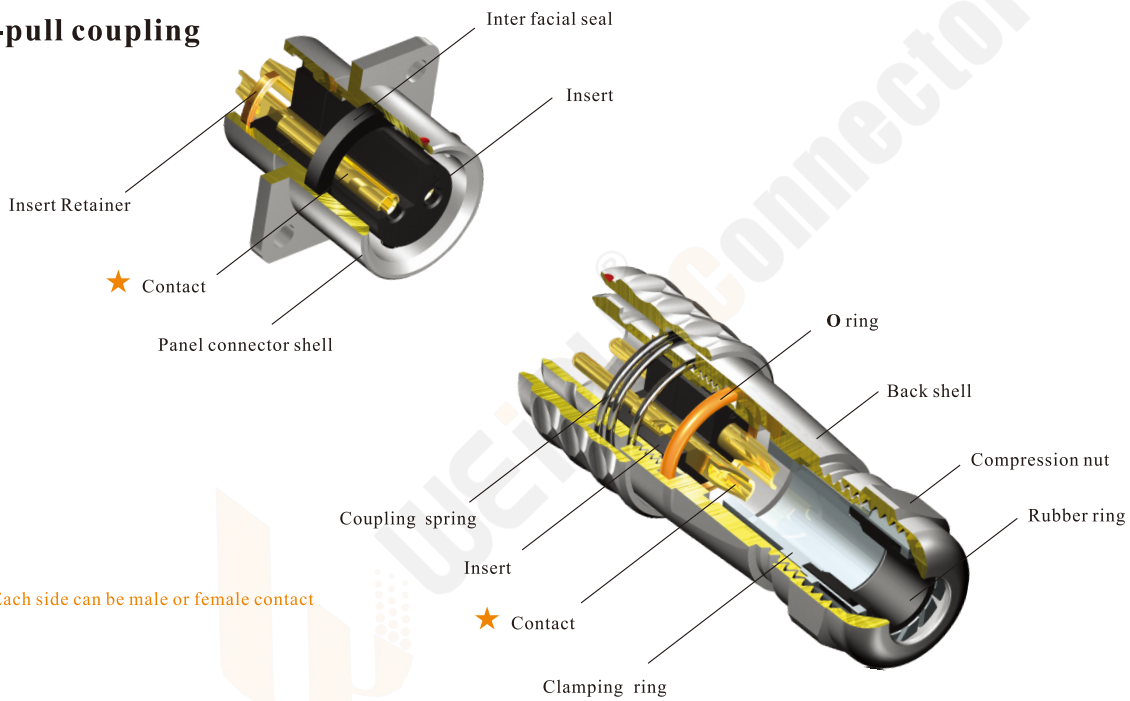


IP67

02



- SF Series IP67
- Push-pull coupling



Material and spec

Coupling	Push-pull
Shell material	Brass with chrome plating
Insert material	PPS max temperature 260 °C
Contact material	Brass with gold plating
Termination	Solder: SF6, SF8, SF10, SF12, SF16, SF20 Crimp: SF16, SF20 Screw: SF20 (Ø2.5mm contact)
Cable outer diameter range	SF6: I: 2-3mm, II: 3-4mm SF12: I: 4-6.5mm, II: 5-8mm SF8: I: 3-4mm, II: 4-5mm SF16: I: 5-8mm, II: 8-12mm SF10: I: 3-4mm, II: 4-6.5mm SF20: I: 5-9mm, II: 8-12mm
IP rating	IP67
Mating cycle	500
Temperature range	-40°C ~ +85°C
Insulation resistance	2000MΩ

SF16 Series

**SF
16**

02

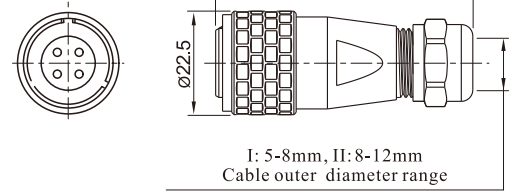


Cable connector
Mate with SF1611, SF1612,
SF1613, SF1615

SF1610 / P _ _ _ SF1610 / S _ _ _

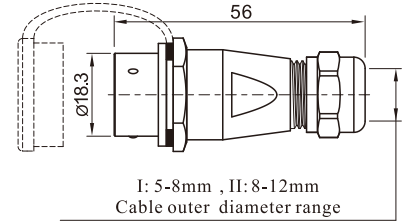
Male contact

I: solder, 3: crimp
Cable outer diameter
I: 5-8mm, II: 8-12mm
Number of contact
Female contact



In-line cable connector
Mate with SF1610

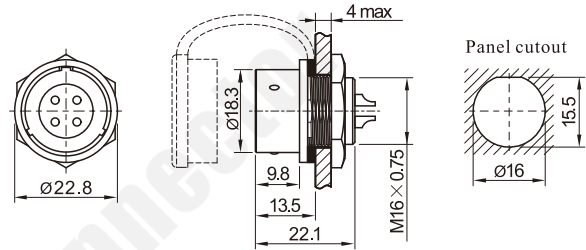
SF1611 / P _ _ _ SF1611 / S _ _ _



Rear-nut mount
Mate with SF1610

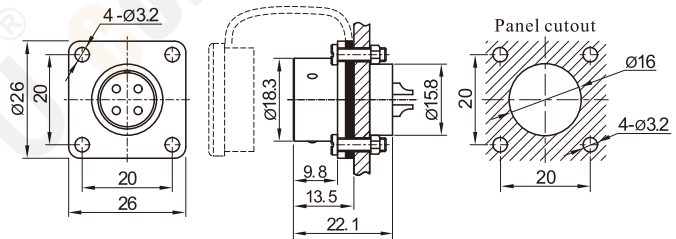
SF1612 / P _ _ _ SF1612 / S _ _ _

I: solder, 3: crimp
Number of contact



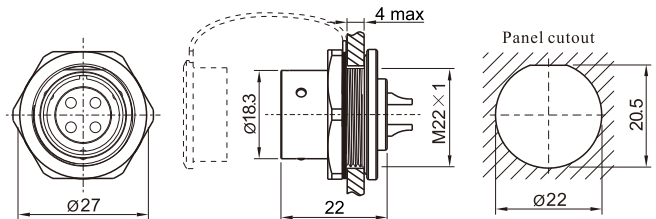
Square flange
Mate with SF1610

SF1613 / P _ _ _ SF1613 / S _ _ _



Front-nut mount
Mate with SF1610

SF1615 / P _ _ _ SF1615 / S _ _ _



Solder contact spec

★ Crimp contact spec see P20

Number of contact	2	3	4	2B	3B	4B	5	7	9	10
Male contact face view										
Rated current (A)	10	10	5	15	15	15	5	5	5	5
Contact diameter(mm)	Ø1.5X2	Ø1.5X3	Ø1X4	Ø2X2	Ø2X3	Ø2X4	Ø1X5	Ø1X7	Ø1X9	Ø1X10
Rated voltage (AC.V)	500	500	500	500	500	500	500	400	400	400
Test voltage(AC.V) 1 min	1500	1500	1500	1500	1500	1500	1500	1200	1200	1200
Contact resistance (mΩ)	2.5	2.5	5	2.5	2.5	2.5	5	5	5	5
Wire size (mm ² /AWG)	≤2/14	≤2/14	≤0.75/18	≤2/14	≤2/14	≤2/14	≤0.75/18	≤0.75/18	≤0.75/18	≤0.75/18