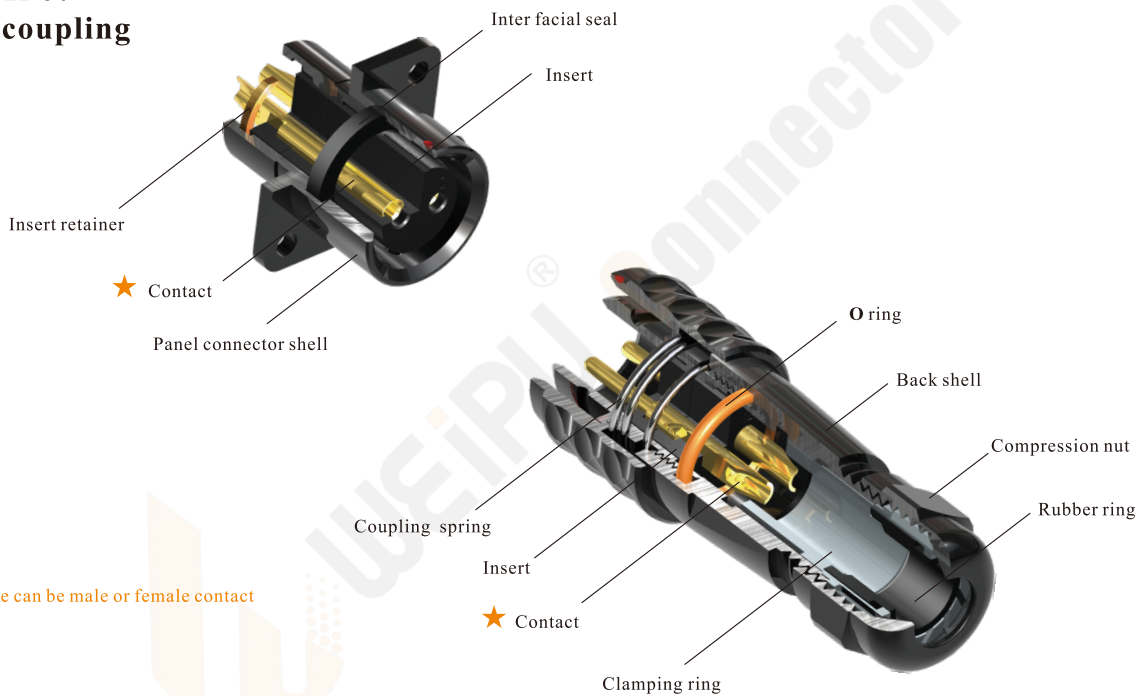


IP67



- SA Series IP67
- Push-pull coupling



Material and spec

Coupling	Push-pull
Shell material	Anodized aluminium
Insert material	PPS, max temperature 260 °C
Contact material	Brass with gold plating
Termination	Solder: SA6, SA8, SA10, SA12, SA16, SA20, SA24, SA28 Crimp: SA16, SA20, SA24, SA28 Screw: SA20, SA24, SA28
Cable outer diameter range	SA6: I:2-3mm, II:3-4mm SA12: I: 4-6.5mm , II: 5-8mm SA24:10-14mm SA8: I:3-4mm, II:4-5mm SA16: I: 5-8mm , II: 8-12mm SA28:I:9-13mm, II :13-16mm SA10:I:3-4mm, II:4-6.5mm SA20: I: 5-9mm, II: 8-12mm
IP rating	IP67
Mating cycle	500, USB:1000
Temperature range	-40°C ~ +85°C; SA24 Data: -20°C ~ +70°C
Insulation resistance	2000 MΩ

SA16 Series

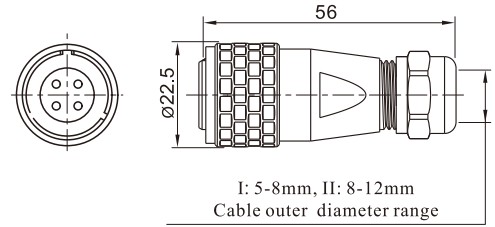
**SA
16**



Cable connector
Mate with SA1611, SA1612,
SA1613, SA1615

SA1610/P --- SA1610/S
Male contact
Female contact
Number of contact
Cable outer diameter
I: 5-8mm, II: 8-12mm

I: solder, 3: crimp
Colour:
B: Black
S: Silver
L: Blue (special order)
G: Green (special order)
R: Red (special order)

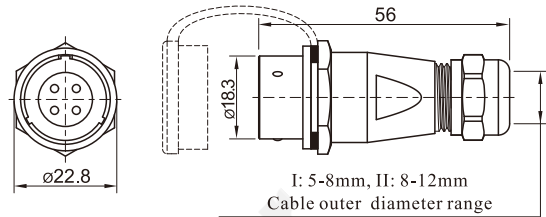


03



In-line cable connector
Mate with SA1610

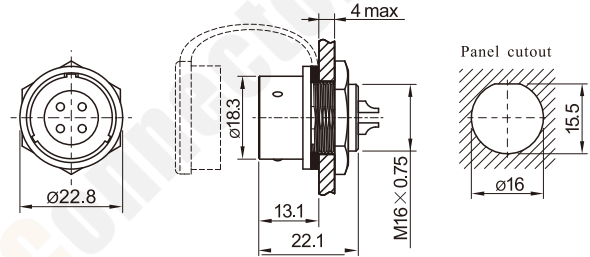
SA1611/P --- SA1611/S



Rear-nut mount
Mate with SA1610

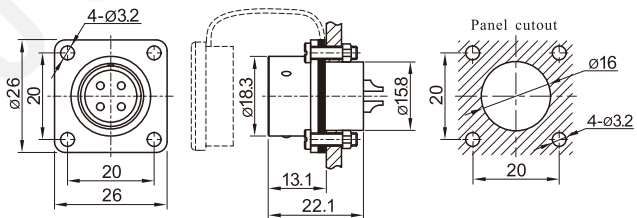
SA1612/P --- SA1612/S
Number of contact
Colour

I: solder, 3: crimp



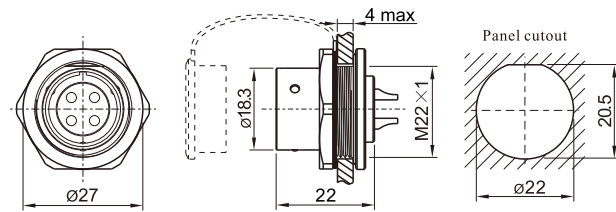
Square flange
Mate with SA1610

SA1613/P --- SA1613/S



Front-nut mount
Mate with SA1610

SA1615/P --- SA1615/S



Solder contact spec

★ Crimp contact spec see P20

Number of contact	2	3	4	2B	3B	4B	5	7	9	10
Male contact face view										
Rated current (A)	10	10	5	15	15	15	5	5	5	5
Contact diameter(mm)	Ø1.5X2	Ø1.5X3	Ø1X4	Ø2X2	Ø2X3	Ø2X4	Ø1X5	Ø1X7	Ø1X9	Ø1X10
Rated voltage (AC.V)	500	500	500	500	500	500	500	400	400	400
Test voltage(AC.V) 1 min	1500	1500	1500	1500	1500	1500	1500	1200	1200	1200
Contact resistance (mΩ)	2.5	2.5	5	2.5	2.5	2.5	5	5	5	5
Wire size (mm²/AWG)	≤2/14	≤2/14	≤0.75/18	≤2/14	≤2/14	≤2/14	≤0.75/18	≤0.75/18	≤0.75/18	≤0.75/18