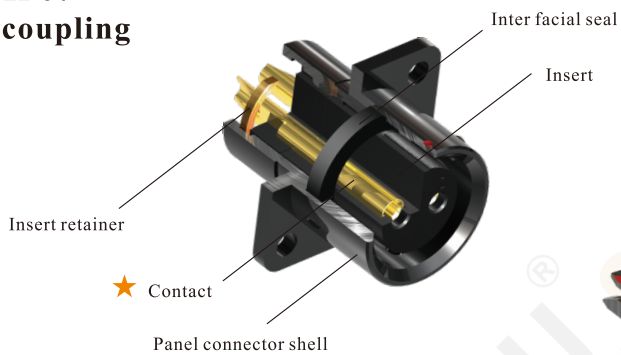


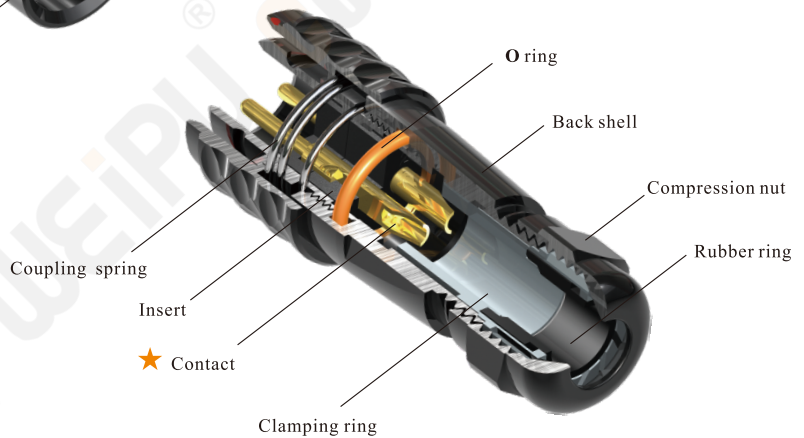
IP67



- SA Series IP67
- Push-pull coupling



★ Each side can be male or female contact



Material and spec

Coupling	Push-pull
Shell material	Anodized aluminium
Insert material	PPS, max temperature 260 °C
Contact material	Brass with gold plating
Termination	Solder: SA6, SA8, SA10, SA12, SA16, SA20, SA24, SA28 Crimp: SA16, SA20, SA24, SA28 Screw: SA20, SA24, SA28
Cable outer diameter range	SA6: I:2-3mm, II:3-4mm SA12: I: 4-6.5mm , II: 5-8mm SA24:10-14mm SA8: I:3-4mm, II: 4-5mm SA16: I: 5-8mm , II: 8-12mm SA28:I:9-13mm, II :13-16mm SA10:I:3-4mm, II:4-6.5mm SA20: I: 5-9mm, II: 8-12mm
IP rating	IP67
Mating cycle	500, USB:1000
Temperature range	-40°C ~ +85°C; SA24 Data: -20°C ~ +70°C
Insulation resistance	2000 MΩ

SA10 Series



Cable connector
Mate with SA1011, SA1012,
SA1015

SA1010 / P SA1010 / S

Male contact

Colour:
B: Black
S: Silver

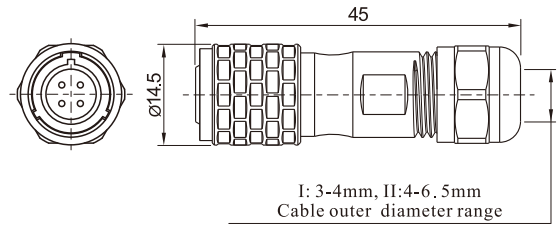
L: Blue (special order)
G: Green (special order)
R: Red (special order)

Cable outer diameter range

I: 3-4mm, II: 4-6.5mm

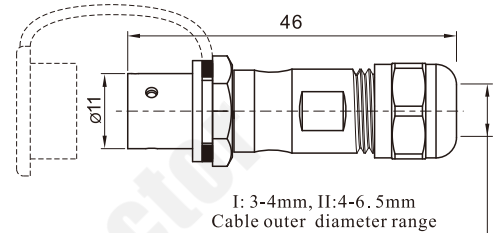
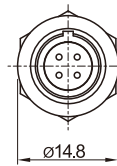
Number of contact

Female contact



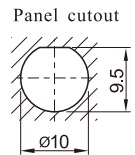
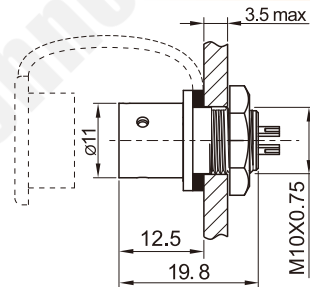
In-line cable connector
Mate with SA1010

SA1011 / P SA1011 / S



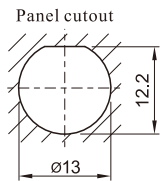
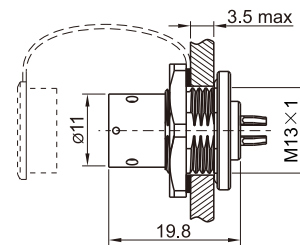
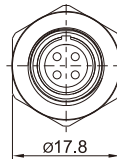
Rear-nut mount
Mate with SA1010

SA1012 / P SA1012 / S



Front-nut mount
Mate with SA1010

SA1015 / P SA1015 / S



Solder contact spec

Number of contact	2	3	4	5
Male contact face view				
Rated current (A)	5	5	3	3
Contact diameter(mm)	Ø1×2	Ø1×3	Ø0.7×4	Ø0.7×5
Rated voltage (AC.V)	180	180	125	125
Test voltage(AC.V) 1 min	1000	1000	1000	1000
Contact resistance(mΩ)	5	5	10	10
Wire size(mm²/AWG)	≤0.75/18	≤0.75/18	≤0.5/20	≤0.5/20