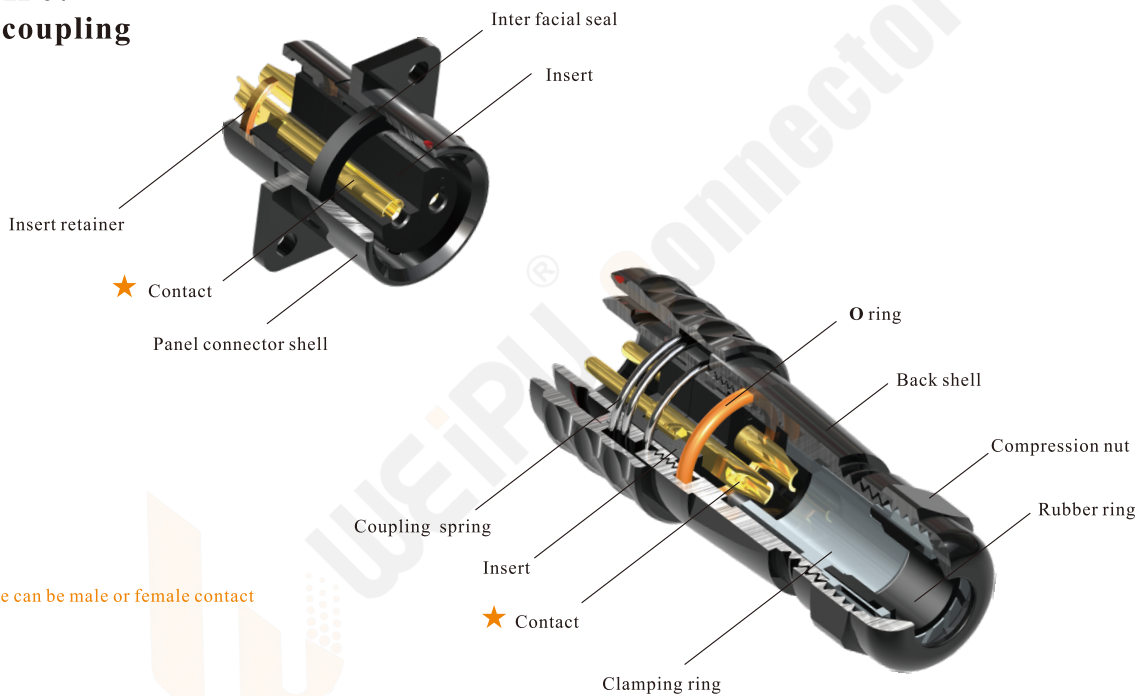


IP67

03



- SA Series IP67
- Push-pull coupling



★ Each side can be male or female contact

Material and spec

Coupling	Push-pull
Shell material	Anodized aluminium
Insert material	PPS, max temperature 260 °C
Contact material	Brass with gold plating
Termination	Solder: SA6, SA8, SA10, SA12, SA16, SA20, SA24, SA28 Crimp: SA16, SA20, SA24, SA28 Screw: SA20, SA24, SA28
Cable outer diameter range	SA6: I:2-3mm, II:3-4mm    SA12: I: 4-6.5mm , II: 5-8mm    SA24:10-14mm SA8: I:3-4mm, II: 4-5mm    SA16: I: 5-8mm , II: 8-12mm    SA28:I:9-13mm, II :13-16mm SA10:I:3-4mm, II:4-6.5mm    SA20: I: 5-9mm, II: 8-12mm
IP rating	IP67
Mating cycle	500, USB:1000
Temperature range	-40°C ~ +85°C; SA24 Data: -20°C ~ +70°C
Insulation resistance	2000 MΩ

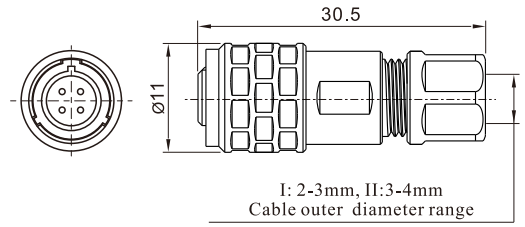
SA6 Series



Cable connector  
Mate with SA611, SA612,  
SA615

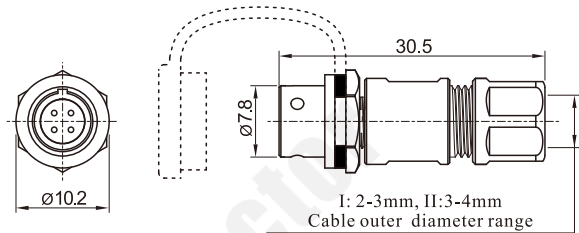
SA610 / P \_\_\_\_\_ SA610 / S \_\_\_\_\_  
Male contact

- Colour:
- B: Black
- S: Silver
- L: Blue (special order)
- G: Green (special order)
- R: Red (special order)
- Cable outer diameter range
- I: 2-3mm, II:3-4mm
- Number of contact
- Female contact



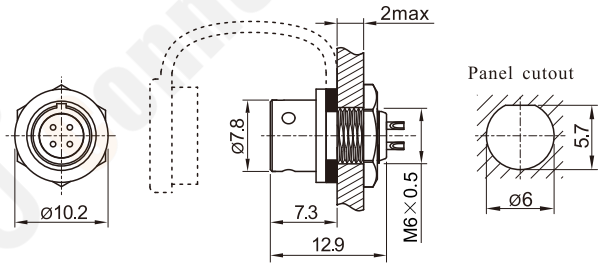
In-line cable connector  
Mate with SA610

SA611 / P \_\_\_\_\_ SA611 / S \_\_\_\_\_



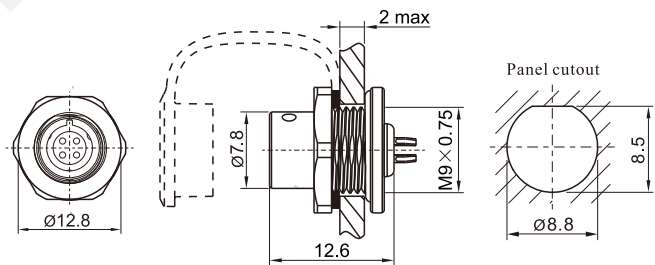
Rear-nut mount  
Mate with SA610

SA612 / P \_\_\_\_\_ SA612 / S \_\_\_\_\_



Front-nut mount  
Mate with SA610

SA615 / P \_\_\_\_\_ SA615 / S \_\_\_\_\_



Solder contact spec

Number of contact	2	3	4	5
Male contact face view				
Rated current (A)	3	3	3	3
Contact diameter(mm)	∅0.6×2	∅0.6×3	∅0.6×4	∅0.6×5
Rated voltage (AC.V)	30	30	30	30
Test voltage(AC.V) 1 min	500	500	500	500
Contact resistance (mΩ)	10	10	10	10
Wire size (mm <sup>2</sup> /AWG)	≤0.5/20	≤0.5/20	≤0.5/20	≤0.5/20